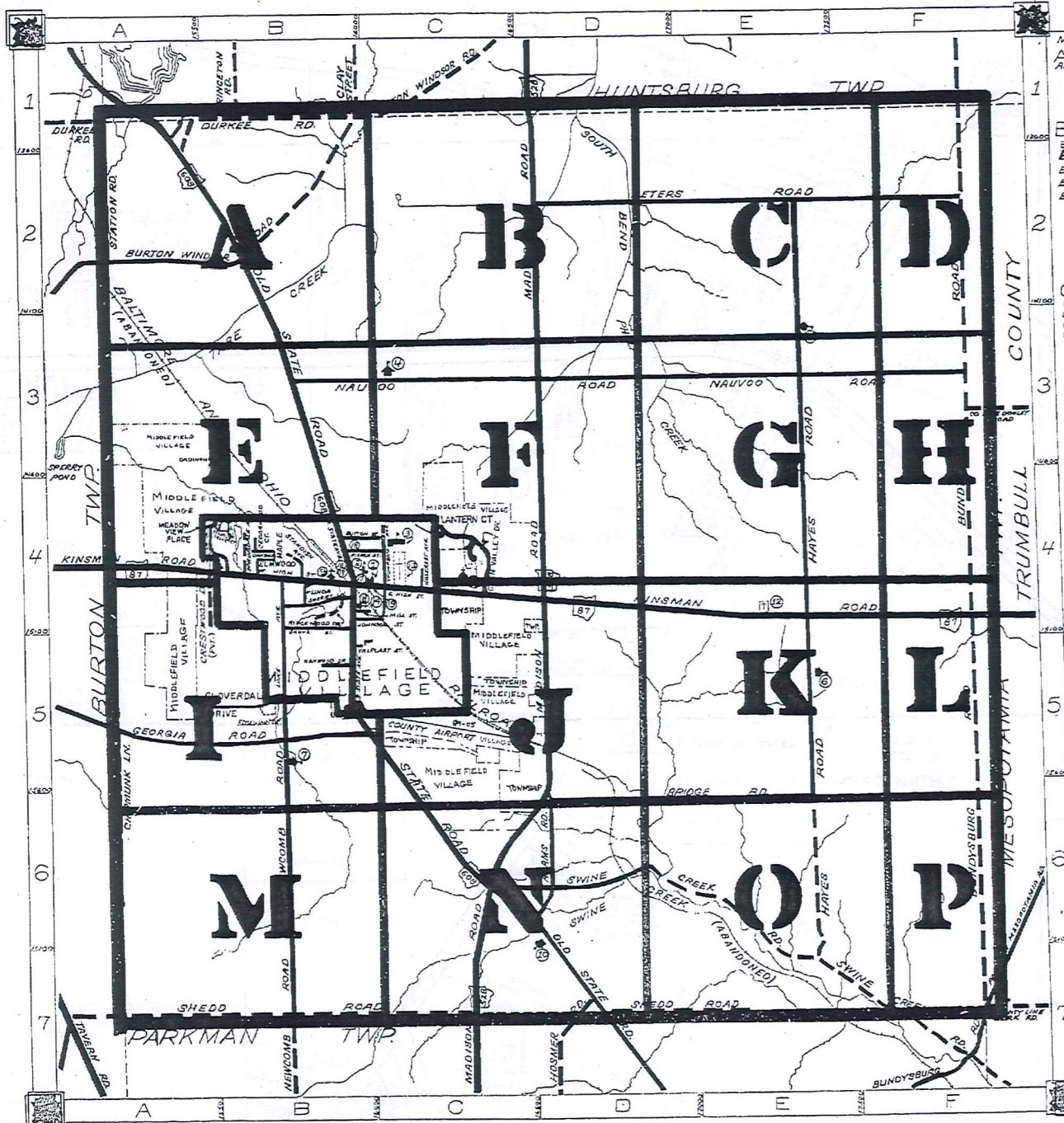


ROAD INDEX



M.V. = MIDDLEFIELD VILLAGE

A ADAMS RD. D6

B BRIDGE RD. D6-E6
BUNDYSBURG RD. F1-F7
BURTON WINDSOR RD. A2-B1
BUTTON ST. (M.V.) B4

C CEDARWOOD CT. (M.V.) B4
CHICKEN LN. A5-A6
CLOVERDALE DR. B5
CRESTWOOD DR. (PVT) B6

D DURKEE RD. A1-B1

E E HIGH ST. (M.V.) B4-C4
ELMWOOD ST. M.V.
EDGEWOOD DR. M.V.

F GEORGIA RD. A5-B5
GLEN VALLEY DR. (M.V.) B4
GROVE ST. (M.V.) B4
GURA RD. A1

G HAYES RD. E2-E7
HILLCREST AVE. (M.V.) C4
HOSMER RD. D7

H HAYES RD. E2-E7
HILLCREST AVE. (M.V.) C4
HOSMER RD. D7

I JOHNSON ST. (M.V.) B4

J RIDGEWOOD DR. (M.V.) B4

K KENWOOD ST. (M.V.) B5
KINSMAN RD. A4-F4

L LAKE AVE. (M.V.) B4-B5
LAKEVIEW DRIVE (M.V.) B4
LANTERN COURT (M.V.) C4
LINDA AVE. (M.V.) B4

M MADISON RD. D1-C7
MAPLE AVE. (M.V.) B4
MEADOW VIEW PL. A4-B4
MILL ST. (M.V.) B4

N NANTUCKET DR. (M.V.) B4
NAUVOO RD. B3-F3
NEWCOMB RD. B5-B7
N. STATE AVE. (M.V.) B4
NORTH VIEW DR. (M.V.) B4

O OAKDALE (M.V.) B4
OLD STATE RD. A1-D7

P PETERS RD. D2-F2
PIERCE ST. (M.V.) B4

Q SHEDD RD. A7-E7
S. STATE AVE. (M.V.) B4-B5
SPERRY LN. (M.V.) B4
SPRINGDALE AVE. (M.V.) B4
STANDISH AVE. (M.V.) B4
STATION RD. A1-A2
SWINE CREEK RD. C6-F7

R THOMPSON AVE. (M.V.) C4

S VALPLAST ST. (M.V.) B5

T W HIGH ST. (M.V.) B4

U

V

W

X

Y

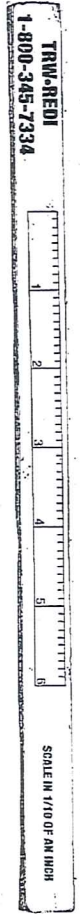
Z

- 1 CARDINAL JUNIOR HIGH SCHOOL
- 2 MIDDLEFIELD ELEMENTARY SCHOOL
- 3 CARDINAL HIGH SCHOOL
- 4 AMISH SCHOOL
- 5 AMISH SCHOOL
- 6 AMISH SCHOOL
- 7 AMISH SCHOOL
- 8 THE FIRST METHODIST CHURCH
- 9 WESLEYAN METHODIST CHURCH
- 10 MENNONITE CHURCH
- 11 ST. LUIG'S CATHOLIC CHURCH
- 12 HAYES CORNERS CEMETERY
- 13 MIDDLEFIELD CEMETERY
- 14 UNITED STATES POST OFFICE
- 15 MIDDLEFIELD VOL. FIRE DEPT.
- 16 MIDDLEFIELD MUNICIPAL CENTER
- 17 MIDDLEFIELD PUBLIC LIBRARY
- 18 BETHESDA NURSING HOME
- 19 MIDDLEFIELD TOWN HALL

MIDDLEFIELD TOWNSHIP

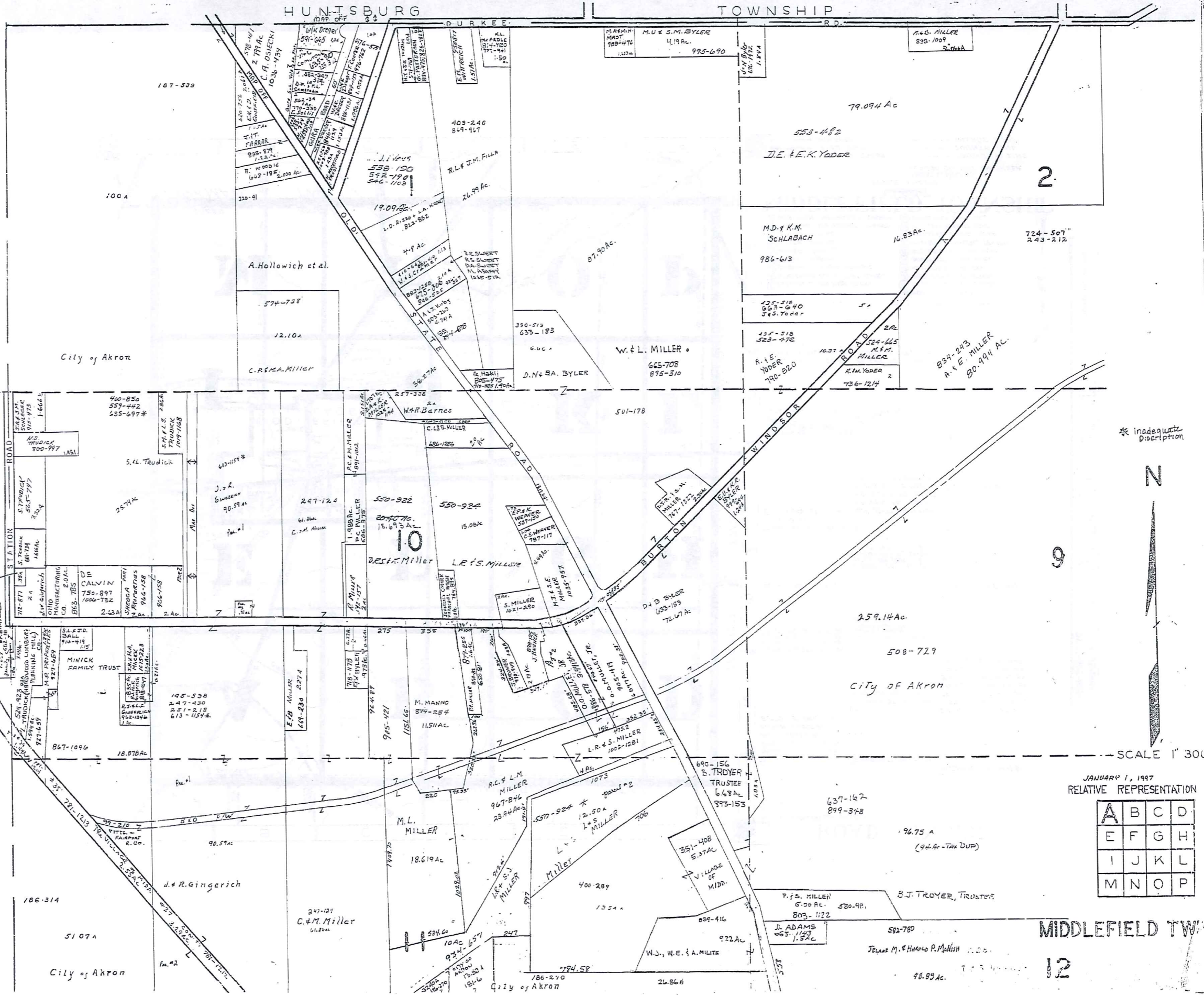
SCALE: 1" = 2000'
ROBERT L. PHILLIPS
GEAUGA COUNTY ENGINEER

UNPAVED ROADS
PAVED ROADS
RAILROAD
TOWNSHIP LINE
COUNTY LINE
VILLAGE LINE



BURTON TOWNSHIP

HUNTSBURG TOWNSHIP



TRIM-REDI
1-800-345-7334

SCALE IN 1/16 OF AN INCH

* inadequate
Description



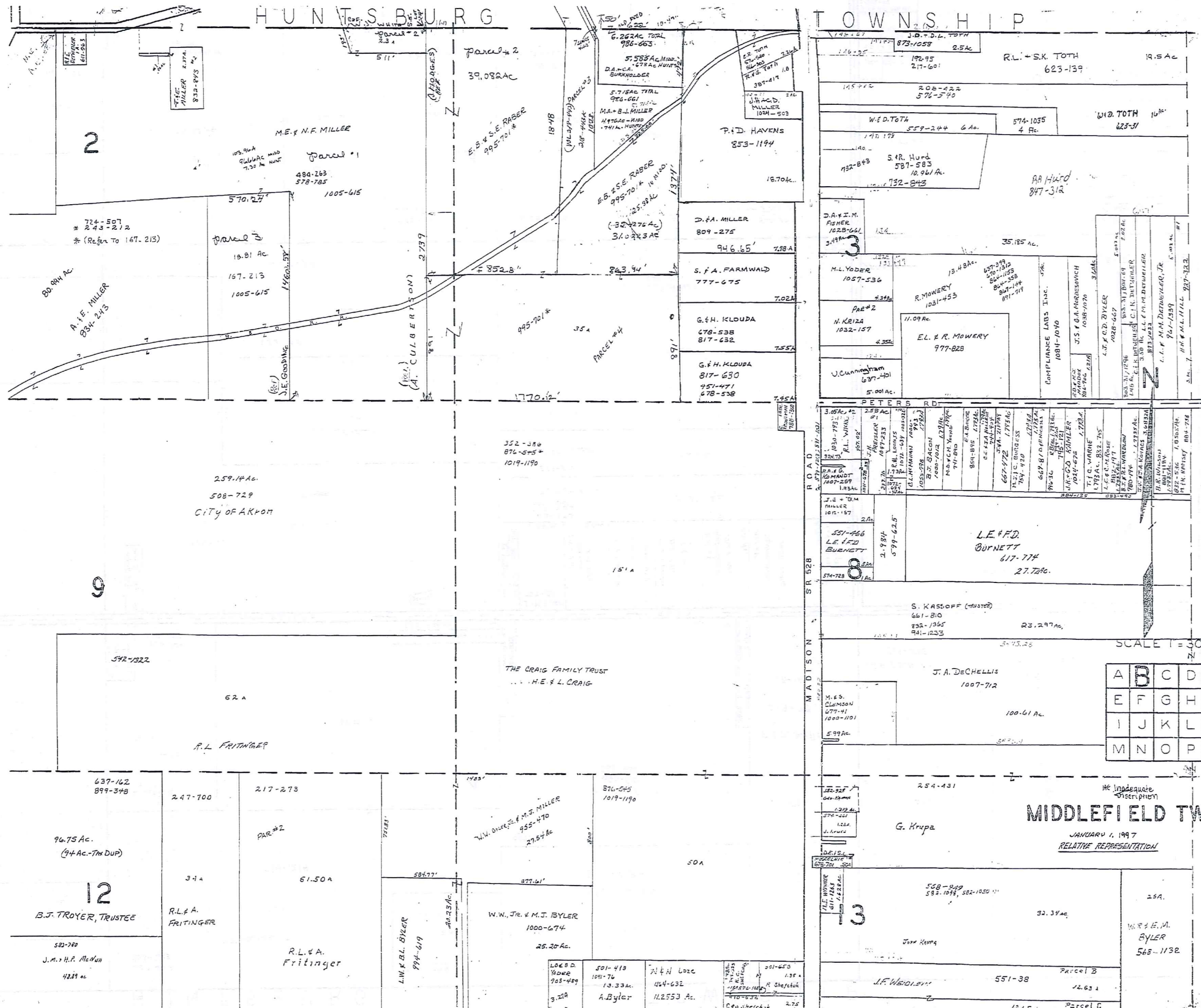
SCALE 1" = 300'

JANUARY 1, 1997
RELATIVE REPRESENTATION

A	B	C	D
E	F	G	H
I	J	K	L
M	N	O	P

MIDDLEFIELD TWP

12



TRM-REDI
1-800-345-7334

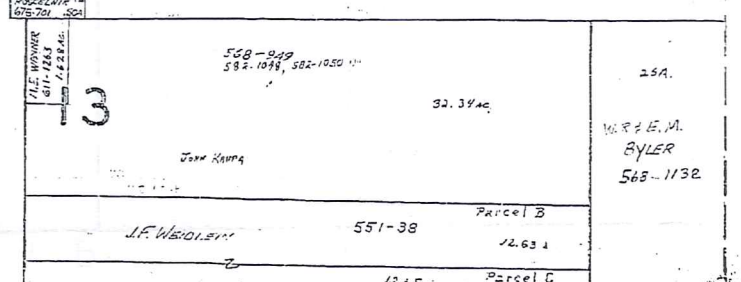
SCALE 1" = 300'

A	B	C	D
E	F	G	H
I	J	K	L
M	N	O	P

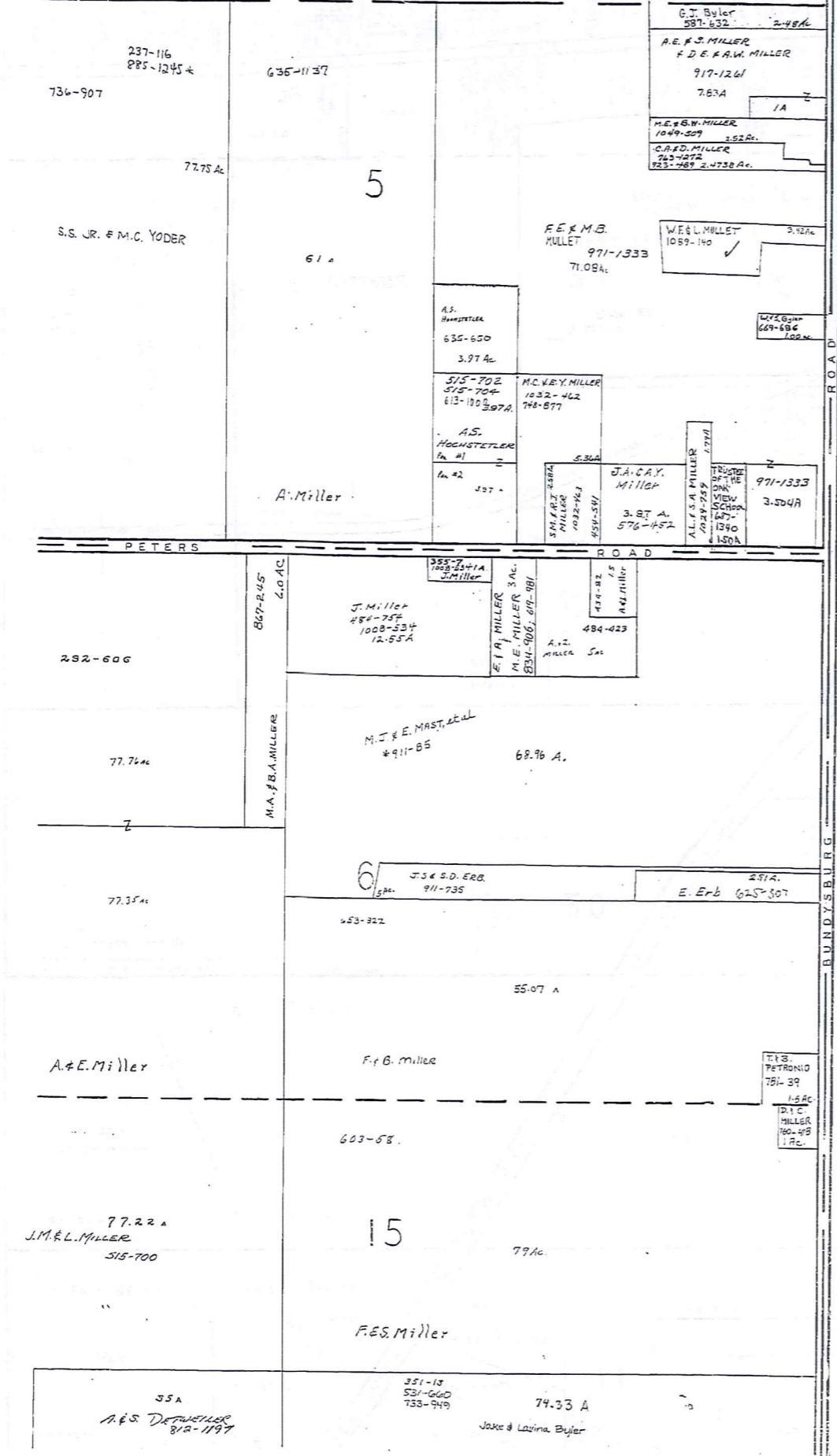
SCALE IN 1/100 OF AN INCH

MIDDLEFIELD TWP.
JANUARY 1, 1997
RELATIVE REPRESENTATION

* Inadequate Description



HUNTSBURG TOWNSHIP



TRUMBULL COUNTY



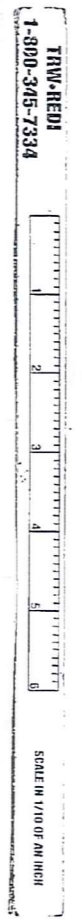
SCALE 1" = 300'

JANUARY 1, 1997
RELATIVE REPRESENTATION

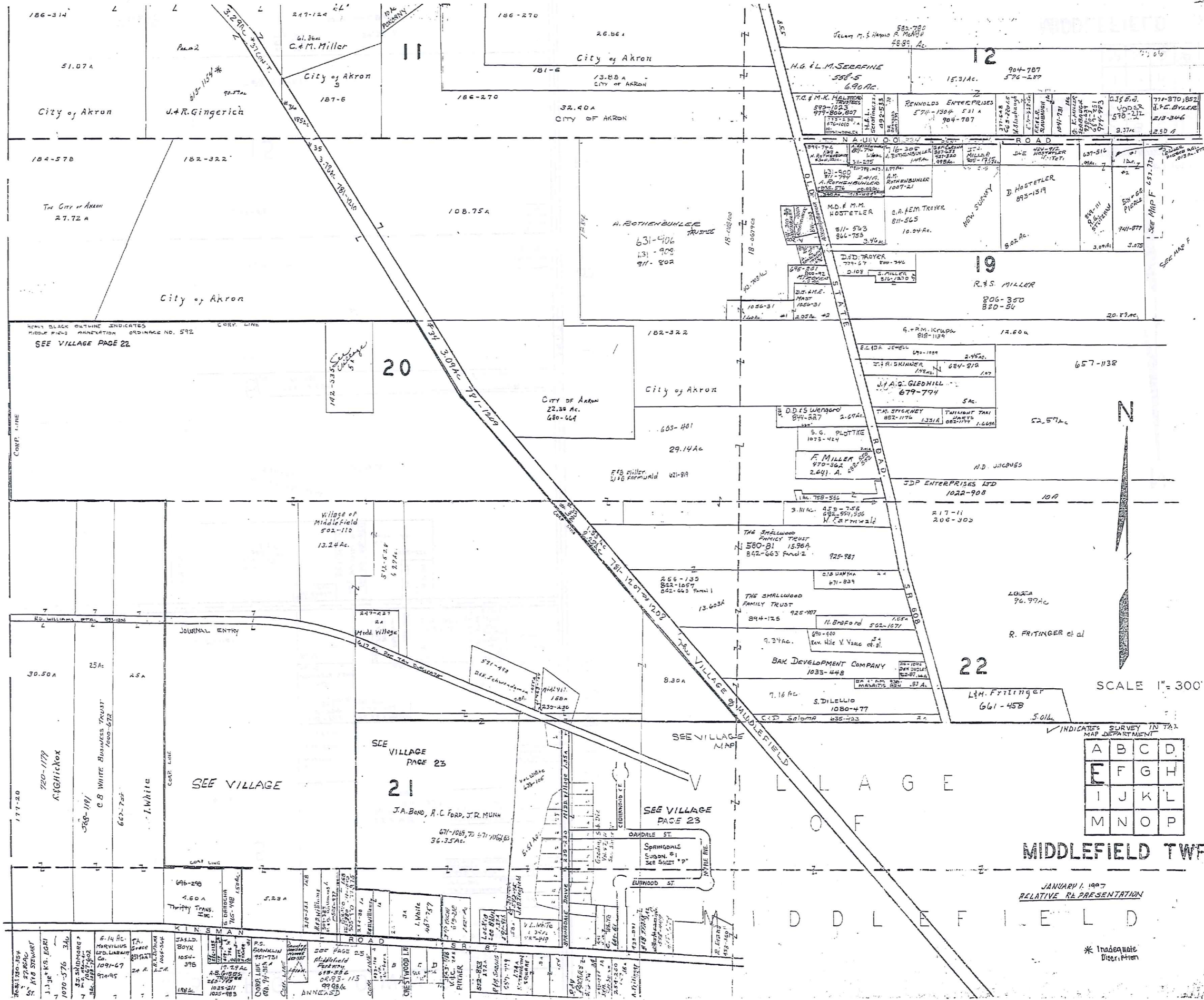
A	B	C	D
E	F	G	H
I	J	K	L
M	N	O	P

* Inadequate Description

MIDDLEFIELD TWP.



BURTON TOWNSHIP



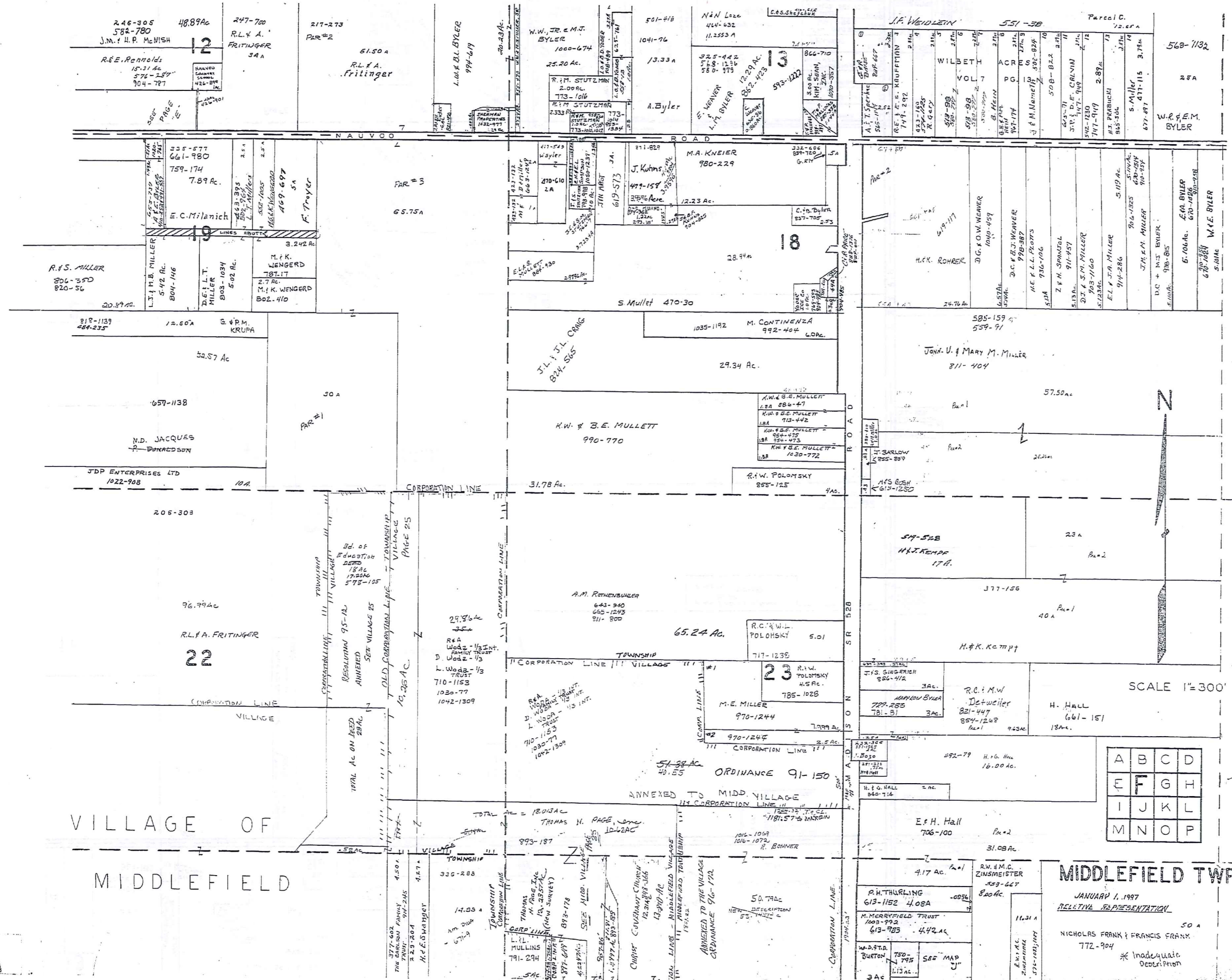
TMA-REDI
1-800-345-7334

A	B	C	D
E	F	G	H
I	J	K	L
M	N	O	P

MIDDLEFIELD TWP

JANUARY 1, 1997
RELATIVE REPRESENTATION

* Inadequate
Description



VILLAGE OF
MIDDLEFIELD

MIDDLEFIELD TWP.

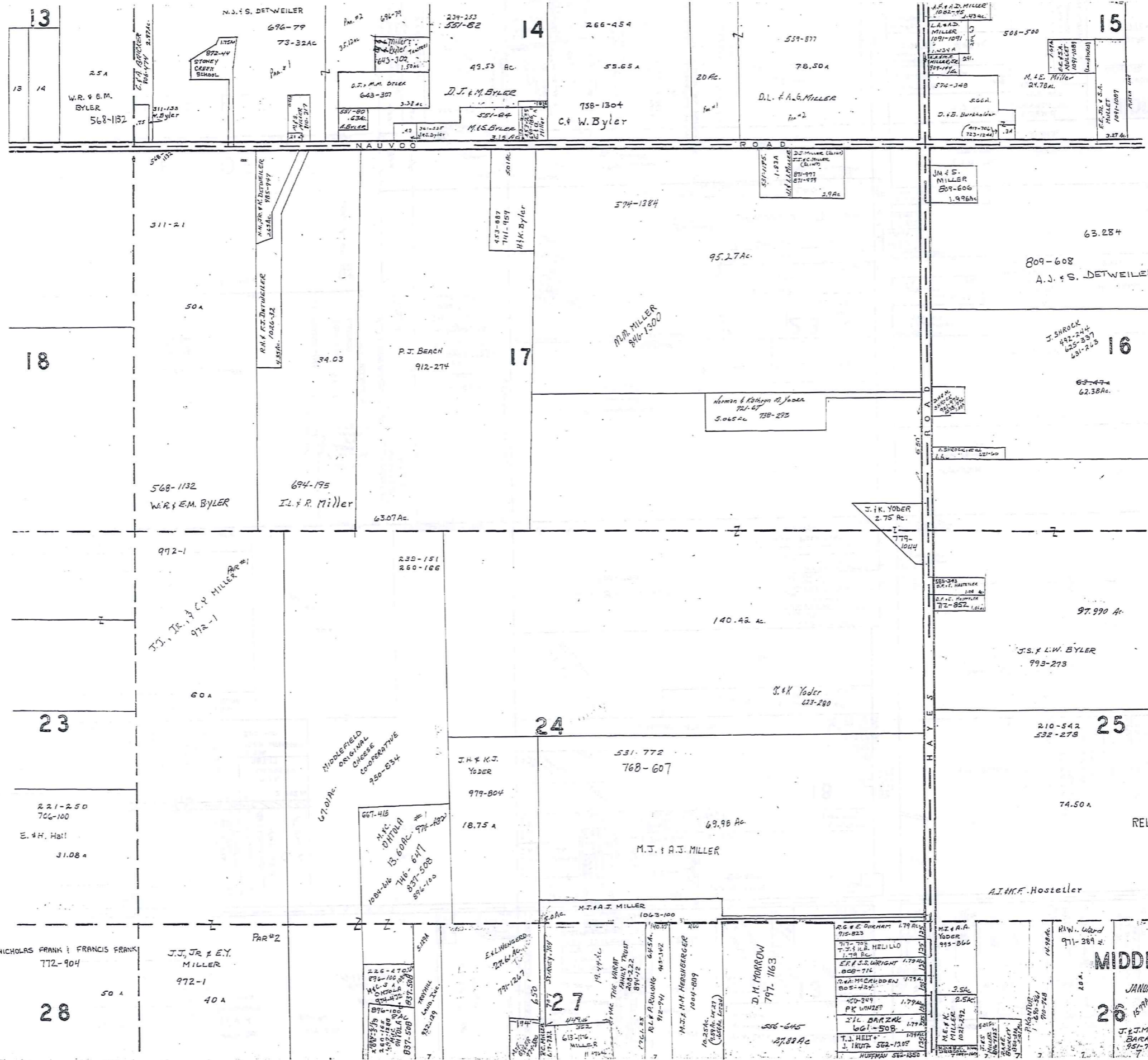
JANUARY 1, 1997
RELATIVE REPRESENTATION
NICHOLAS FRANK & FRANCIS FRANK
772-904
* Inadequate Description

A	B	C	D
E	F	G	H
I	J	K	L
M	N	O	P

SCALE 1"=300'

TSM-REB1
1-800-345-7334

SCALE IN FEET OR ALL INCH



TRIM-REDI
 1-800-345-7334
 SCALE IN TENS OF AN INCH

294



SCALE 1"=300'

RELATIVE REPRESENTATION

A	B	C	D
E	F	G	H
I	J	K	L
M	N	O	P

MIDDLEFIELD TWP.

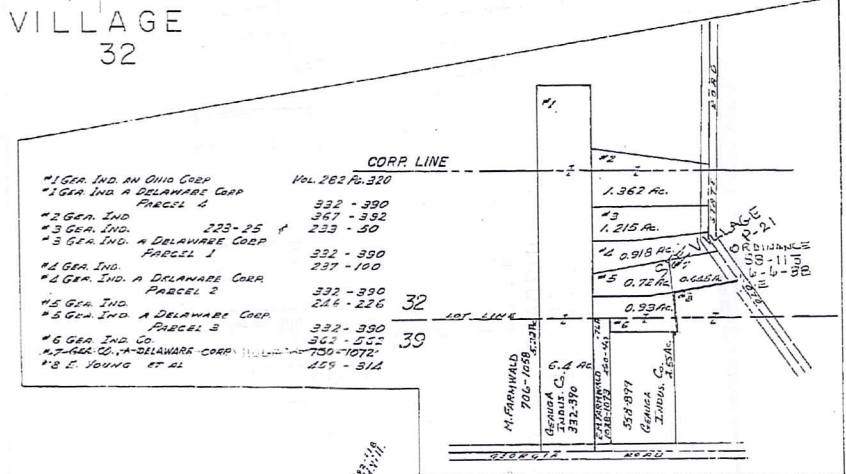
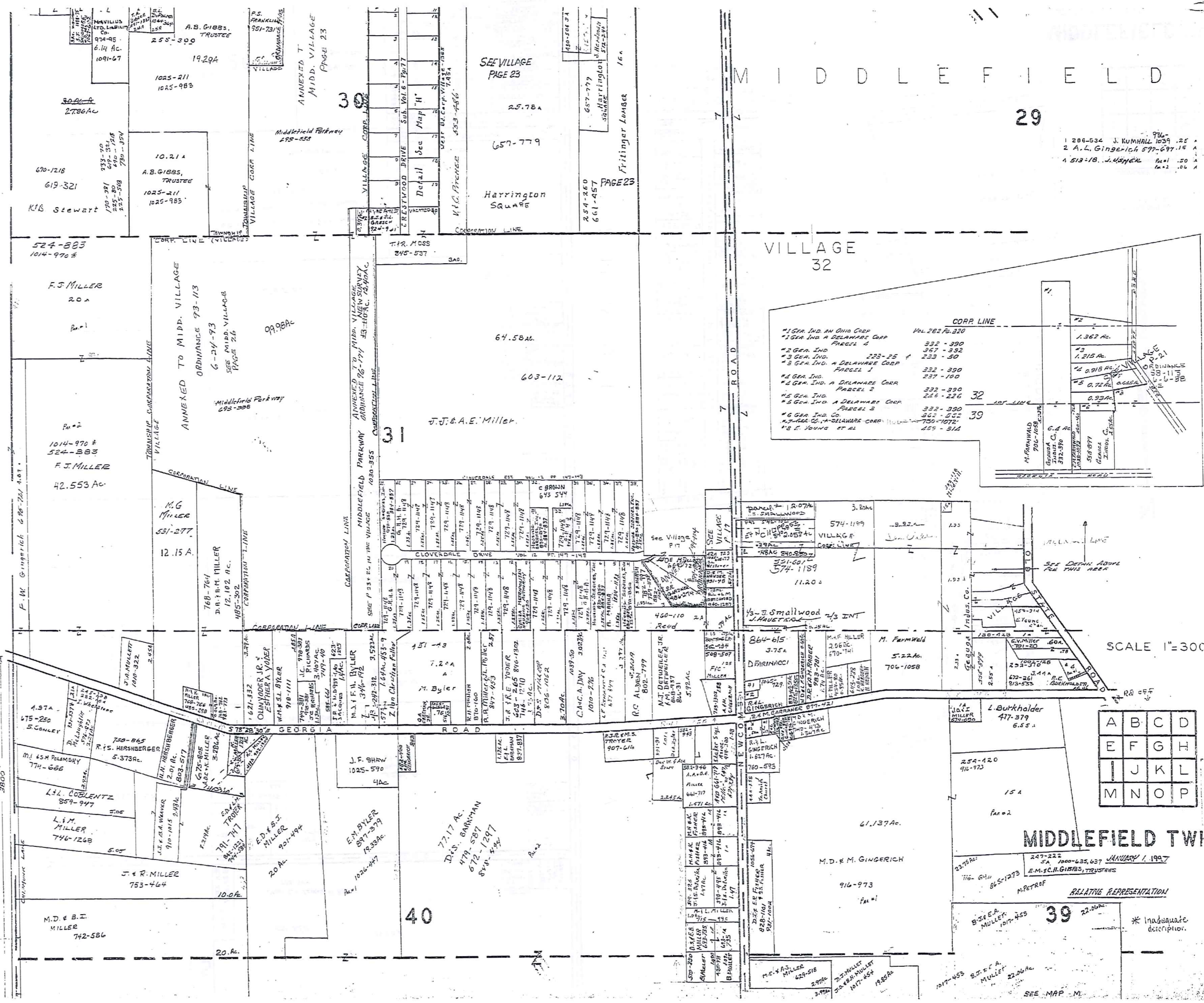
JANUARY 1, 1997
 J.J. & E.Y. MILLER
 972-1
 40 A

BURTON TOWNSHIP

MIDDLEFIELD

29

1 206-534 J. KUMHALL 1059 .25 A
2 A.L. GINGERICH 597-697 19 A
1 513-18 J. USHER 1011 .20 A
1012 .26 A



*1 GEN. IND. AN OHIO CORP	101.262 Ac.
*1 GEN. IND. A DELAWARE CORP	332 - 390
PARCEL 4	367 - 392
*2 GEN. IND.	223 - 25
*3 GEN. IND.	233 - 50
*3 GEN. IND. A DELAWARE CORP	232 - 390
PARCEL 1	237 - 100
*4 GEN. IND. A DELAWARE CORP	232 - 390
PARCEL 2	244 - 226
*5 GEN. IND. A DELAWARE CORP	332 - 390
PARCEL 3	343 - 555
*6 GEN. IND. A DELAWARE CORP	343 - 555
*8 E. YOUNG ET AL	459 - 514

TRAVEL-REDI
1-800-345-7334
SCALE IN 1/100 OF ANCH

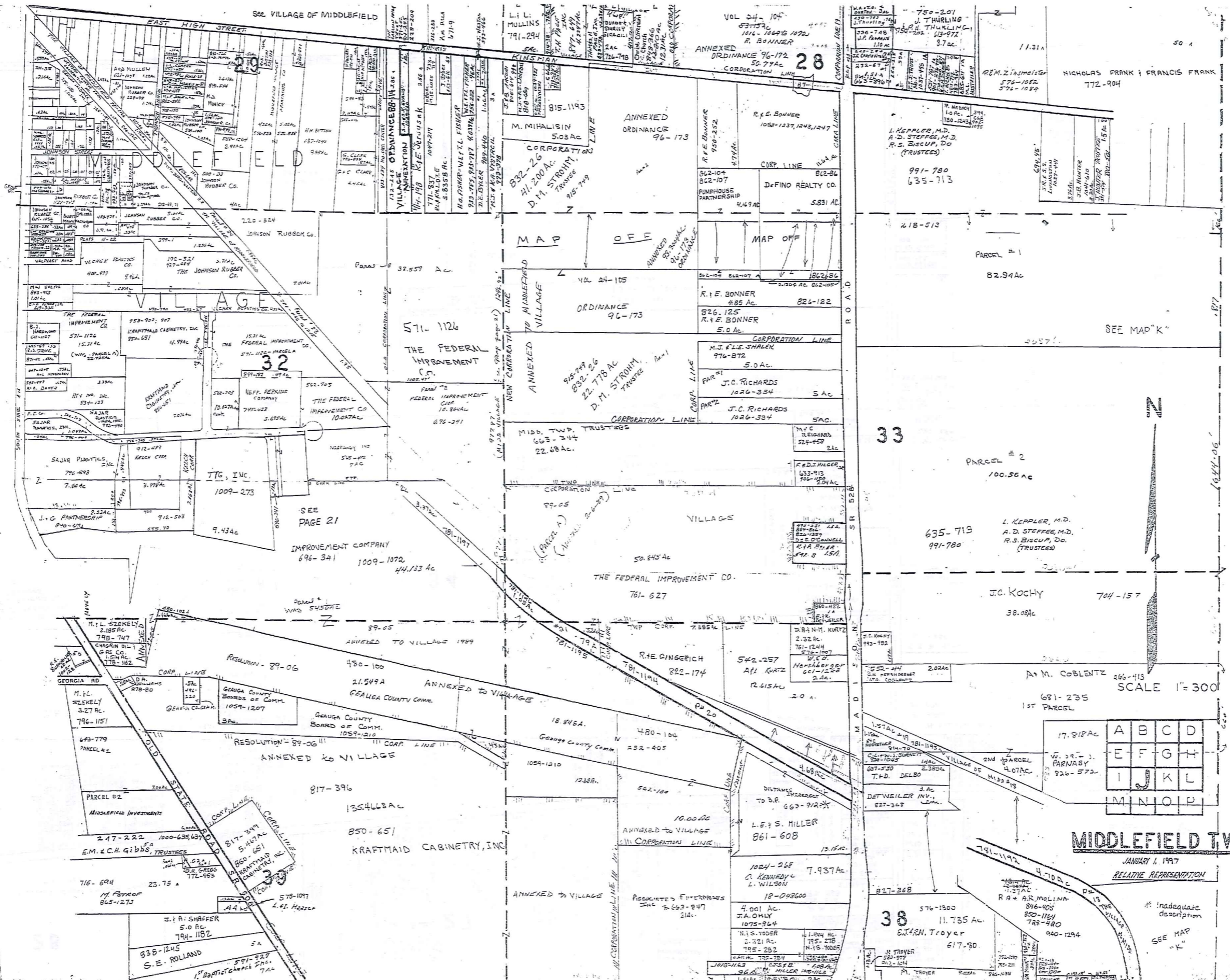
SCALE 1"=300'

A	B	C	D
E	F	G	H
I	J	K	L
M	N	O	P

MIDDLEFIELD TWP

RELATIVE REPRESENTATION

* Inadequate description.



TRM-BEDI
1-800-345-7334

297

SCALE IN 1/4 IN. OR INCH

A	B	C	D
E	F	G	H
I	J	K	L
M	N	O	P

MIDDLEFIELD TWP.
JANUARY 1, 1997
RELATIVE REPRESENTATION

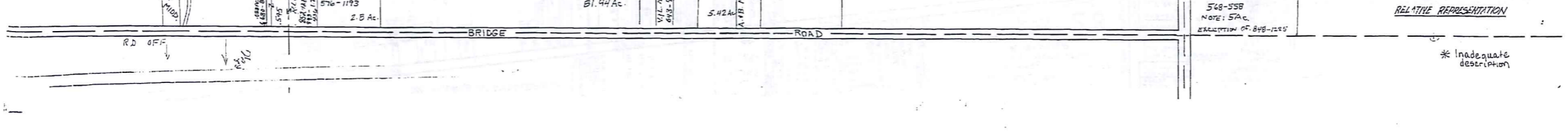
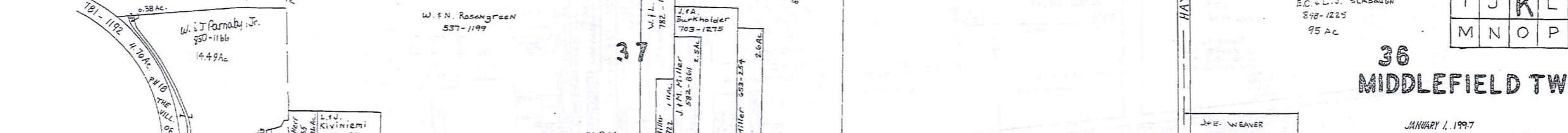
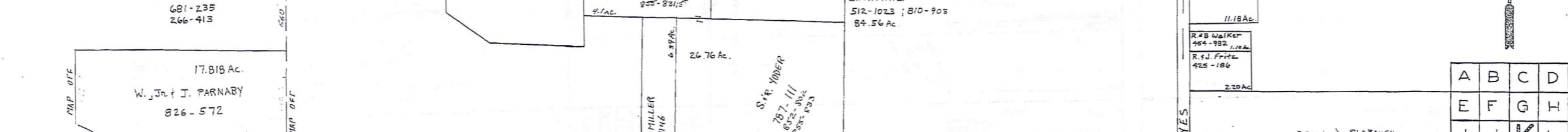
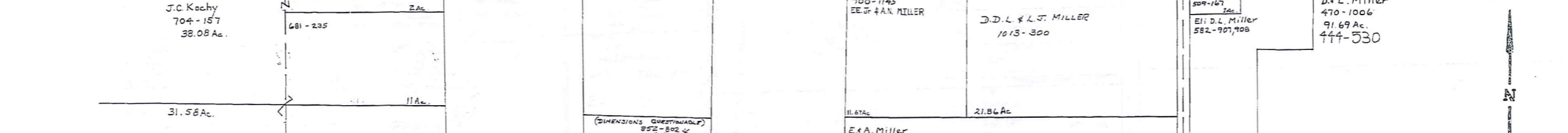
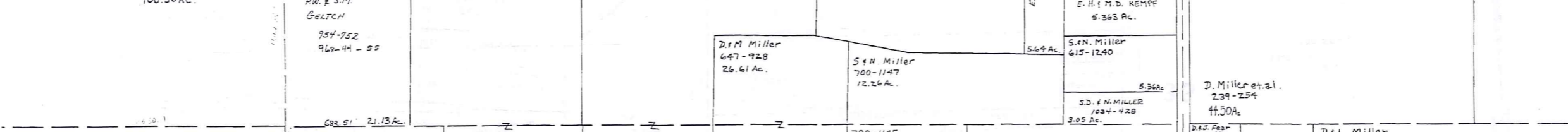
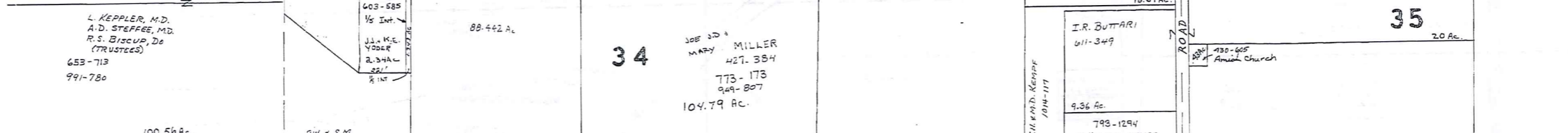
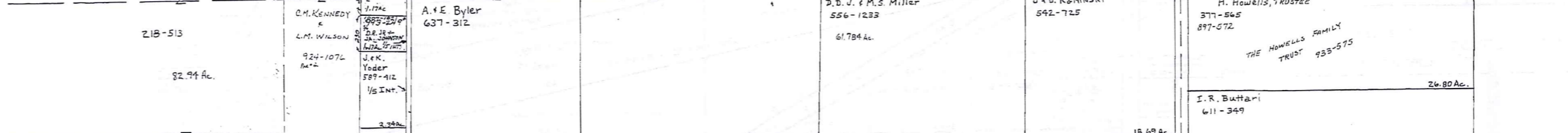
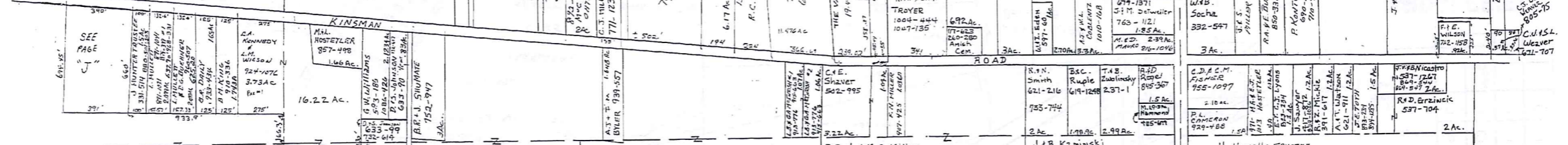
* Inadequate description
SEE MAP "K"

50 Ac.
NICHOLAS FRANK; FRANCIS FRANK
772-904

40 Ac.
J.J. JR. & E.Y. MILLER
972-1

E.L. WENGERD
27-644
791-1267
M.F. BYLER
677-580
R.C. MILLER
677-232
53 AC

D.M. Morrow
556-645
797-1163
27.88 Ac.
R.I. Boggs
615-1188
571-284
1.85 Ac.
D.M. Yoder
854-532
135.2 Ac.
R.W. Ward
971-389
20 Ac.



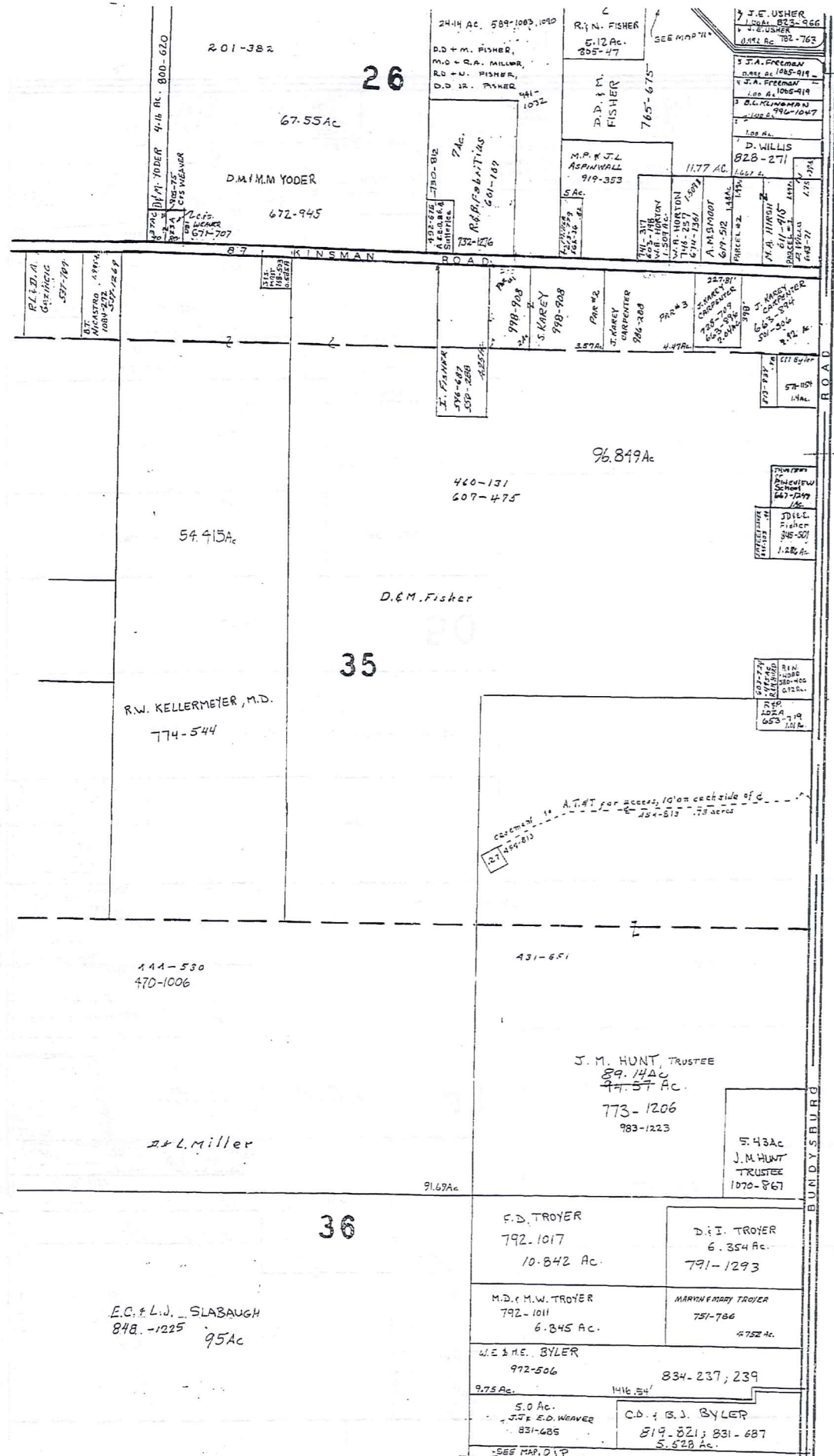
TRW-REDI
1-800-345-7334
SCALE IN 1/10 OF AN INCH

A	B	C	D
E	F	G	H
I	J	K	L
M	N	O	P

36
MIDDLEFIELD TWP.

JANUARY 1, 1997
RELATIVE REPRESENTATION

* Inadequate description



T R U M B U L L C O U N T Y

TRIM-REDI
1-800-345-7334
SCALE IN Y/D OF ARCH



SCALE 1"=300'

JANUARY 1, 1987

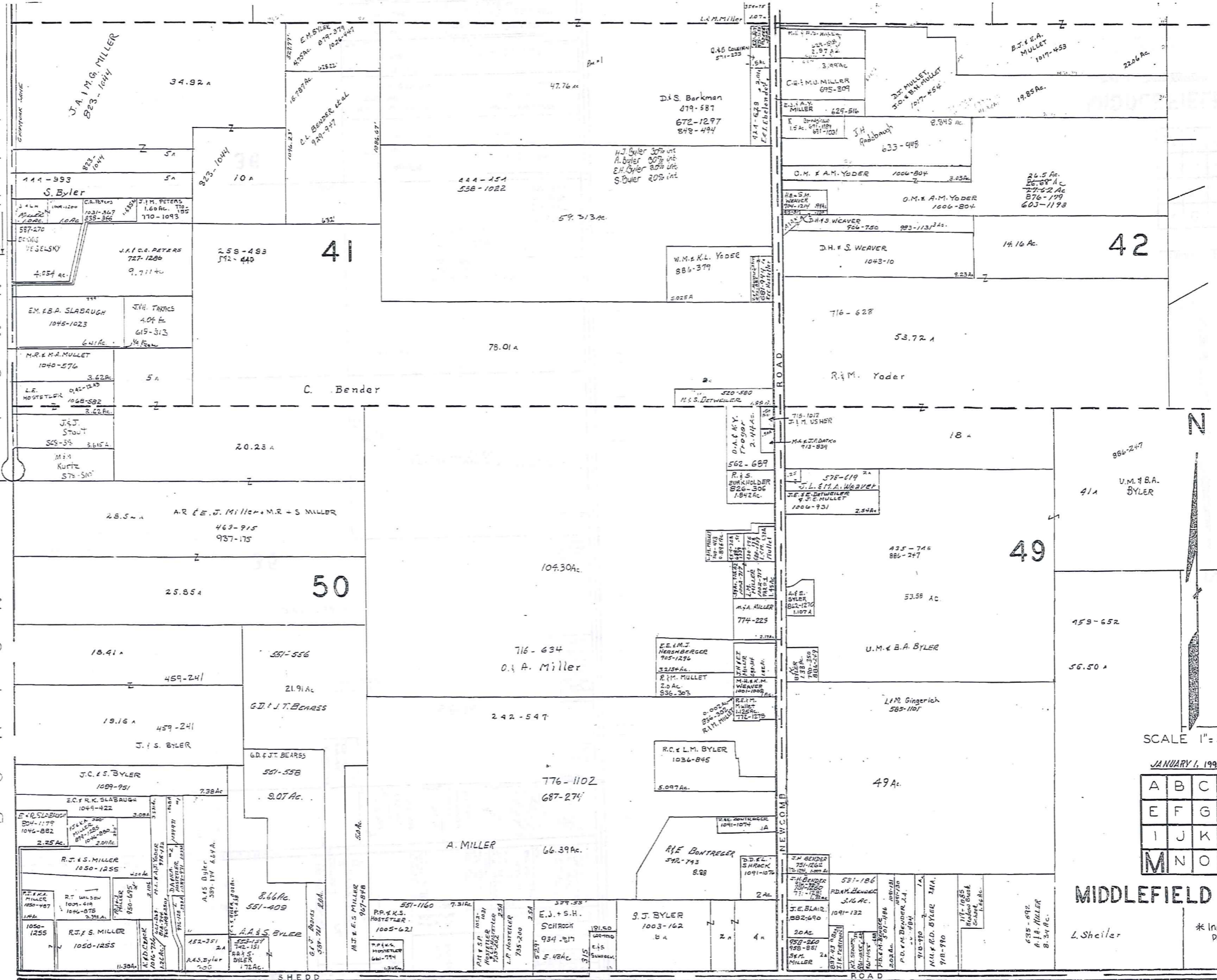
A	B	C	D
E	F	G	H
I	J	K	L
M	N	O	P

MIDDLEFIELD TWP.

RELATIVE REPRESENTATION

* Inadequate Description

TOWNSHIP
S
H
I
P
B
U
R
T
O
N
P
A
R
K
M
A
N
T
O
W
N
S
H
I
P



1-800-345-7334
TRU-REDI
SCALE IN 1/16 OF AN INCH

300

SCALE 1" = 300'

JANUARY 1, 1997

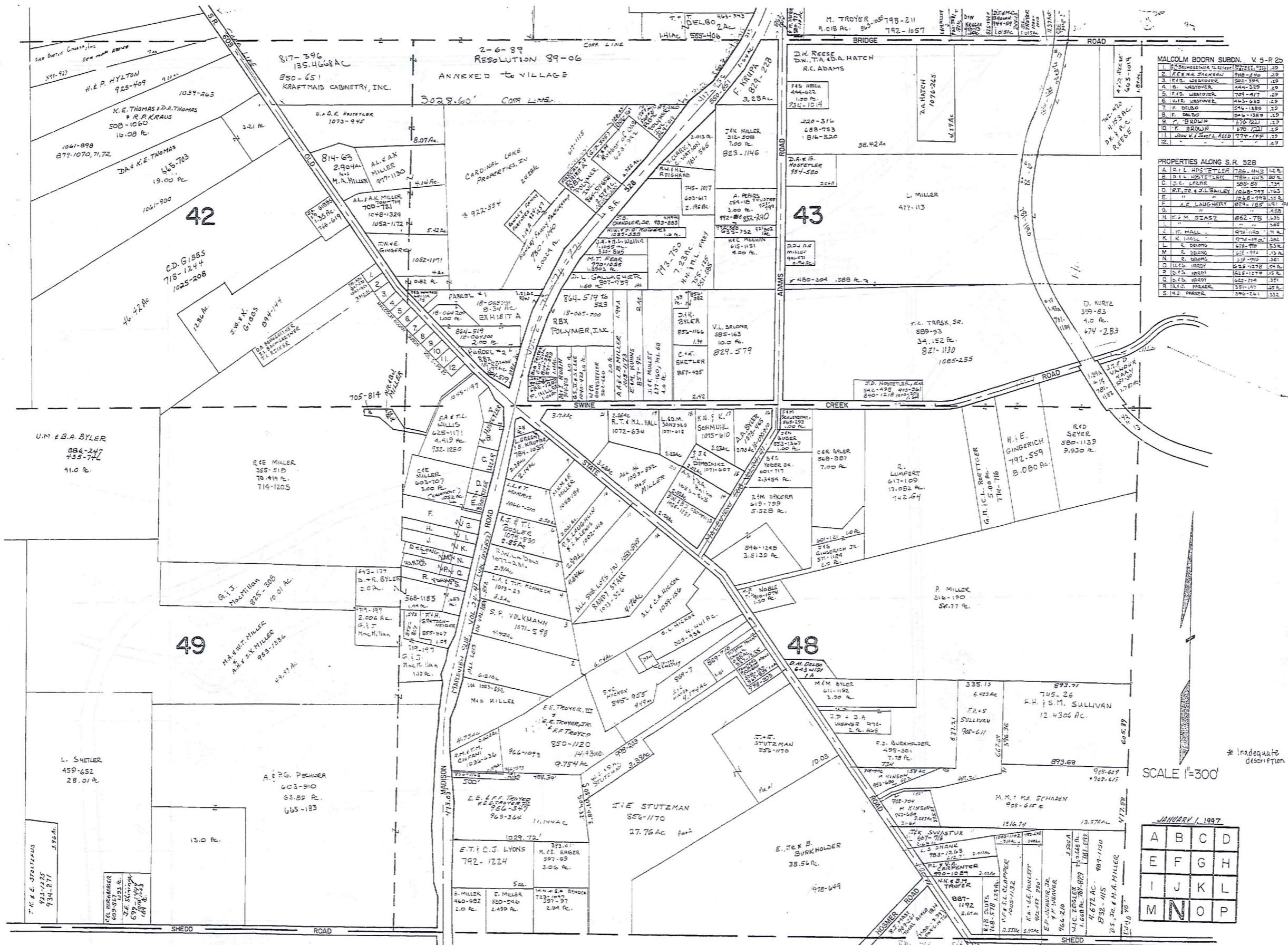
A	B	C	D
E	F	G	H
I	J	K	L
M	N	O	P

MIDDLEFIELD TWP.

* Inadequate Description

P A R K M A N T O W N S H I P

RELATIVE REPRESENTATION



MALCOLM BOORN SUBDN. V 5-R 25

1	P. H. BOORN	100-100	1.00
2	P. H. BOORN	100-100	1.00
3	P. H. BOORN	100-100	1.00
4	P. H. BOORN	100-100	1.00
5	P. H. BOORN	100-100	1.00
6	P. H. BOORN	100-100	1.00
7	P. H. BOORN	100-100	1.00
8	P. H. BOORN	100-100	1.00
9	P. H. BOORN	100-100	1.00
10	P. H. BOORN	100-100	1.00
11	P. H. BOORN	100-100	1.00
12	P. H. BOORN	100-100	1.00

PROPERTIES ALONG S.R. 528

A	R. L. H. STETLER	100-100	1.00
B	R. L. H. STETLER	100-100	1.00
C	R. L. H. STETLER	100-100	1.00
D	R. L. H. STETLER	100-100	1.00
E	R. L. H. STETLER	100-100	1.00
F	R. L. H. STETLER	100-100	1.00
G	R. L. H. STETLER	100-100	1.00
H	R. L. H. STETLER	100-100	1.00
I	R. L. H. STETLER	100-100	1.00
J	R. L. H. STETLER	100-100	1.00
K	R. L. H. STETLER	100-100	1.00
L	R. L. H. STETLER	100-100	1.00
M	R. L. H. STETLER	100-100	1.00
N	R. L. H. STETLER	100-100	1.00
O	R. L. H. STETLER	100-100	1.00
P	R. L. H. STETLER	100-100	1.00
Q	R. L. H. STETLER	100-100	1.00
R	R. L. H. STETLER	100-100	1.00
S	R. L. H. STETLER	100-100	1.00

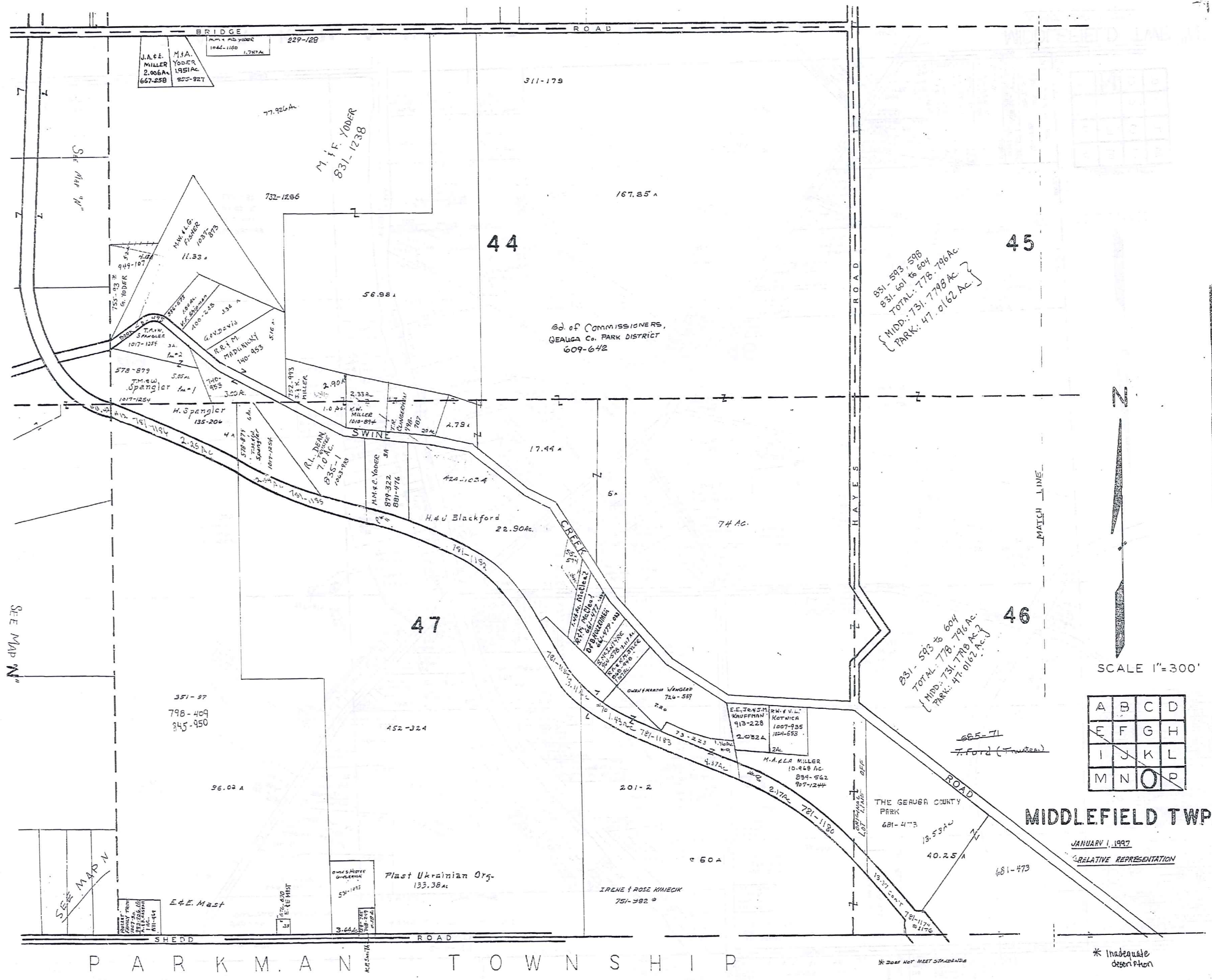
TRW-REDI
1-800-345-7334

SCALE IN 1/10 OF AN INCH

SCALE 1"=300'

JANUARY 1, 1997

A	B	C	D
E	F	G	H
I	J	K	L
M	N	O	P



J.A.F.E. MILLER
2.006A
667-258

M.H.A. YODER
1.951Ac
855-827

BRIDGE ROAD 229-128

311-179

77.926A

M.H.F. YODER
831-1238

732-1286

167.85A

44

45

BO. of COMMISSIONERS,
GEAUGA Co. PARK DISTRICT
609-642

831-593, 598
831-601 to 604
TOTAL: 778.796Ac
MIDD: 731.7798Ac
PARK: 47.0162Ac

M.H.K.G. FISHER
1037-873

11.33A

T.M. SCHMIDT
1017-1258

578-879

T.M. Spangler
1017-1258

H. Spangler
135-206

2.35Ac

191-1194

191-1192

191-1190

191-1188

191-1186

191-1184

191-1182

191-1180

191-1178

191-1176

191-1174

191-1172

191-1170

191-1168

191-1166

191-1164

191-1162

191-1160

191-1158

191-1156

191-1154

191-1152

191-1150

191-1148

191-1146

191-1144

191-1142

191-1140

191-1138

191-1136

191-1134

191-1132

191-1130

191-1128

191-1126

191-1124

191-1122

191-1120

191-1118

191-1116

191-1114

191-1112

191-1110

191-1108

191-1106

191-1104

191-1102

191-1100

191-1098

191-1096

191-1094

191-1092

191-1090

191-1088

191-1086

191-1084

191-1082

191-1080

191-1078

191-1076

191-1074

191-1072

191-1070

191-1068

191-1066

191-1064

191-1062

191-1060

191-1058

191-1056

191-1054

191-1052

191-1050

191-1048

191-1046

191-1044

191-1042

191-1040

191-1038

191-1036

191-1034

191-1032

191-1030

191-1028

191-1026

191-1024

191-1022

191-1020

191-1018

191-1016

191-1014

191-1012

191-1010

191-1008

191-1006

191-1004

191-1002

191-1000

191-998

191-996

191-994

191-992

191-990

191-998

191-996

191-994

191-992

191-990

191-988

191-986

191-984

191-982

191-980

191-978

191-976

191-974

191-972

191-970

191-968

191-966

191-964

191-962

191-960

191-958

191-956

191-954

191-952

191-950

191-948

191-946

191-944

191-942

191-940

191-938

191-936

191-934

191-932

191-930

191-928

191-926

191-924

191-922

191-920

191-918

191-916

191-914

191-912

191-910

191-908

191-906

191-904

191-902

191-900

191-898

191-896

191-894

191-892

191-890

191-888

191-886

191-884

191-882

191-880

191-888

191-886

191-884

191-882

191-880

191-888

191-886

191-884

191-882

191-880

191-888

191-886

191-884

191-882

191-880

191-888

191-886

191-884

191-882

191-880

191-888

191-886

191-884

191-882

191-880

191-888

191-886

191-884

191-882

191-880

191-888

191-886

191-884

191-882

191-880

191-888

191-886

191-884

191-882

191-880

191-888

191-886

191-884

191-882

191-880

191-888

191-886

191-884

191-882

191-880

191-888

191-886

191-884

191-882

191-880

191-888

191-886

191-884

191-882

191-880

191-888

191-886

191-884

191-882

191-880

191-888

191-886

191-884

191-882

191-880

191-888

191-886

191-884

191-882

191-880

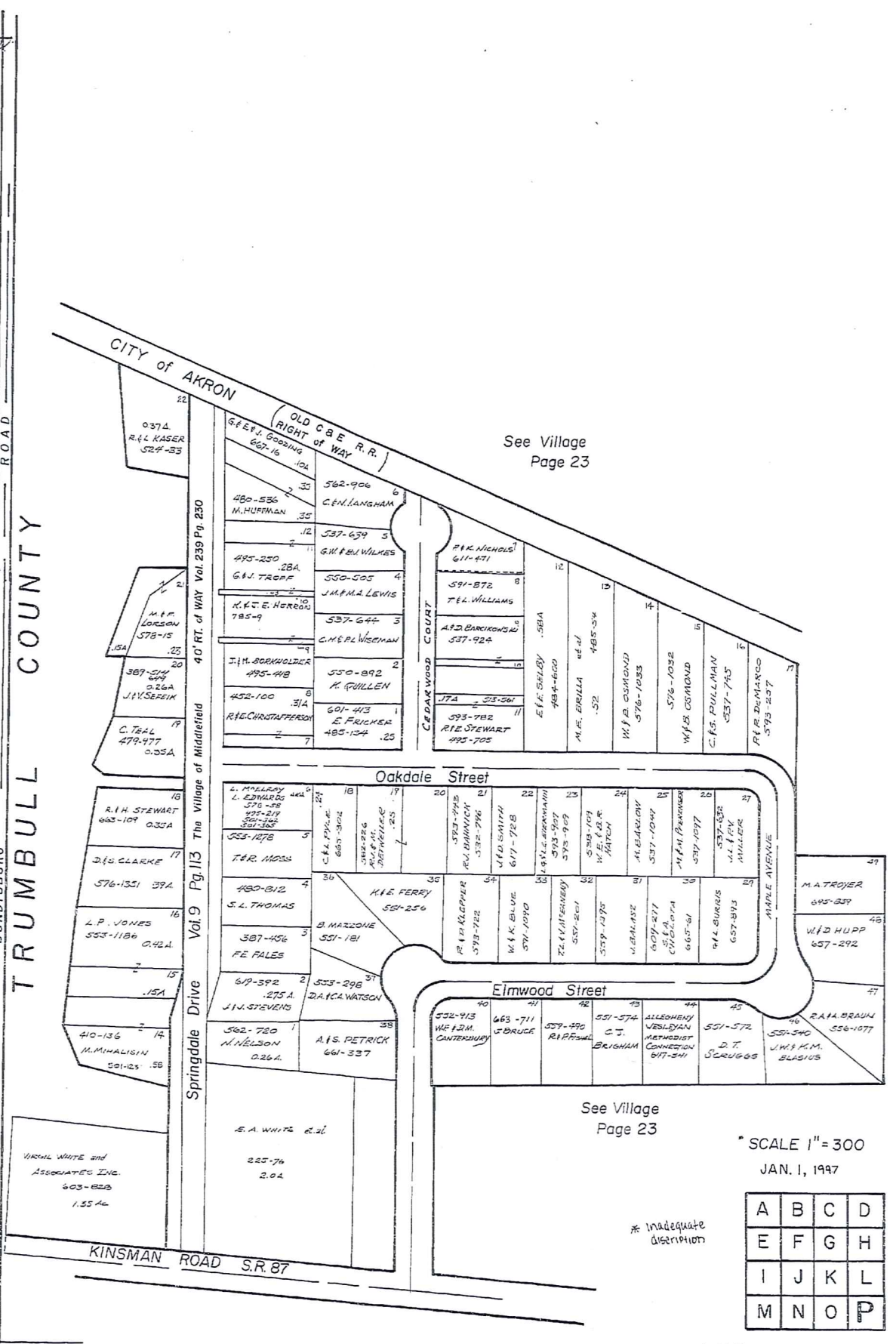
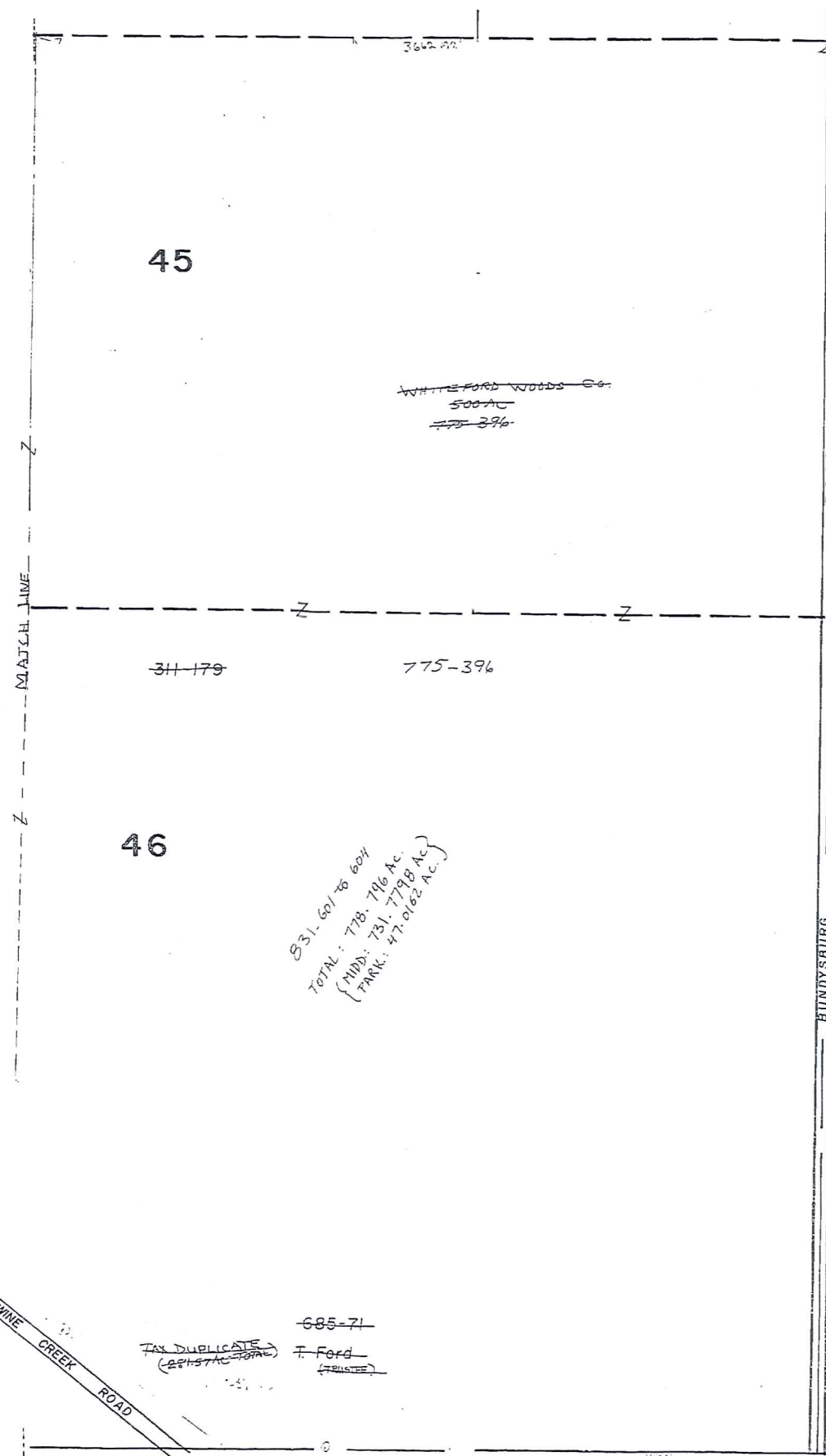
191-888

191-886

191-884

191-882

191-880



See Village Page 23

See Village Page 23

SCALE 1" = 300
JAN. 1, 1997

* Inadequate description

A	B	C	D
E	F	G	H
I	J	K	L
M	N	O	P

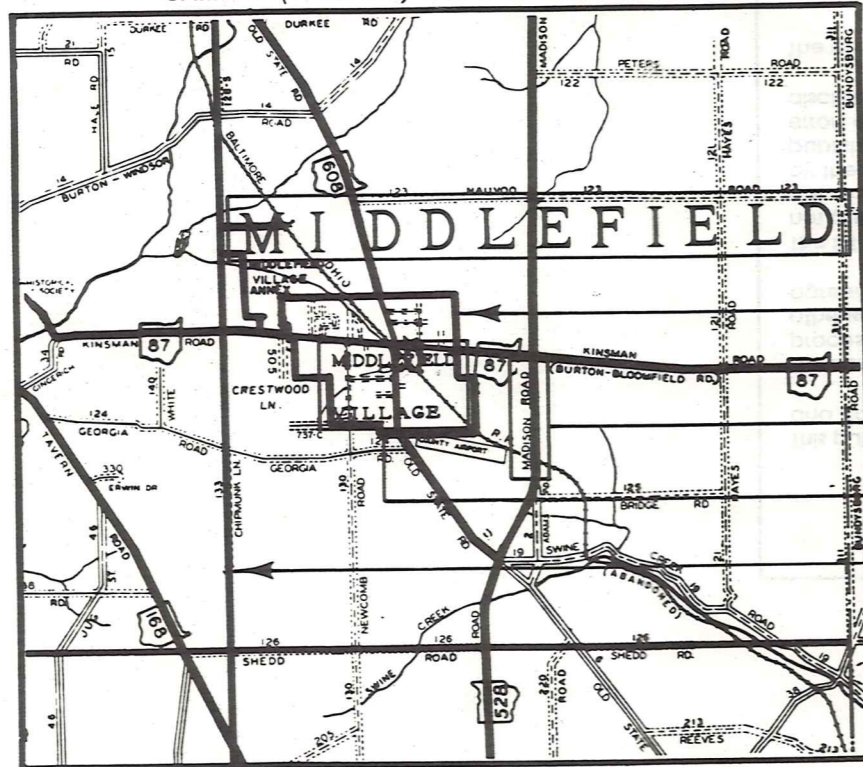
MIDDLEFIELD TWP
RELATIVE REPRESENTATION

TRUMBULL COUNTY
1-800-345-7334
SCALE IN 1/16 OF AN INCH

Explanation and Use Sheet for Geauga County, Ohio

A

SAMPLE (PARTIAL) COUNTY INDEX MAP



Tract Lot Number

Acreage

Township Name

Village Boundary

Street Name

Village Name

Township Boundary

Owners Name

Denotes Continuous Ownership

Deed Book & Page

Map Page Number

Township Name

Village Name

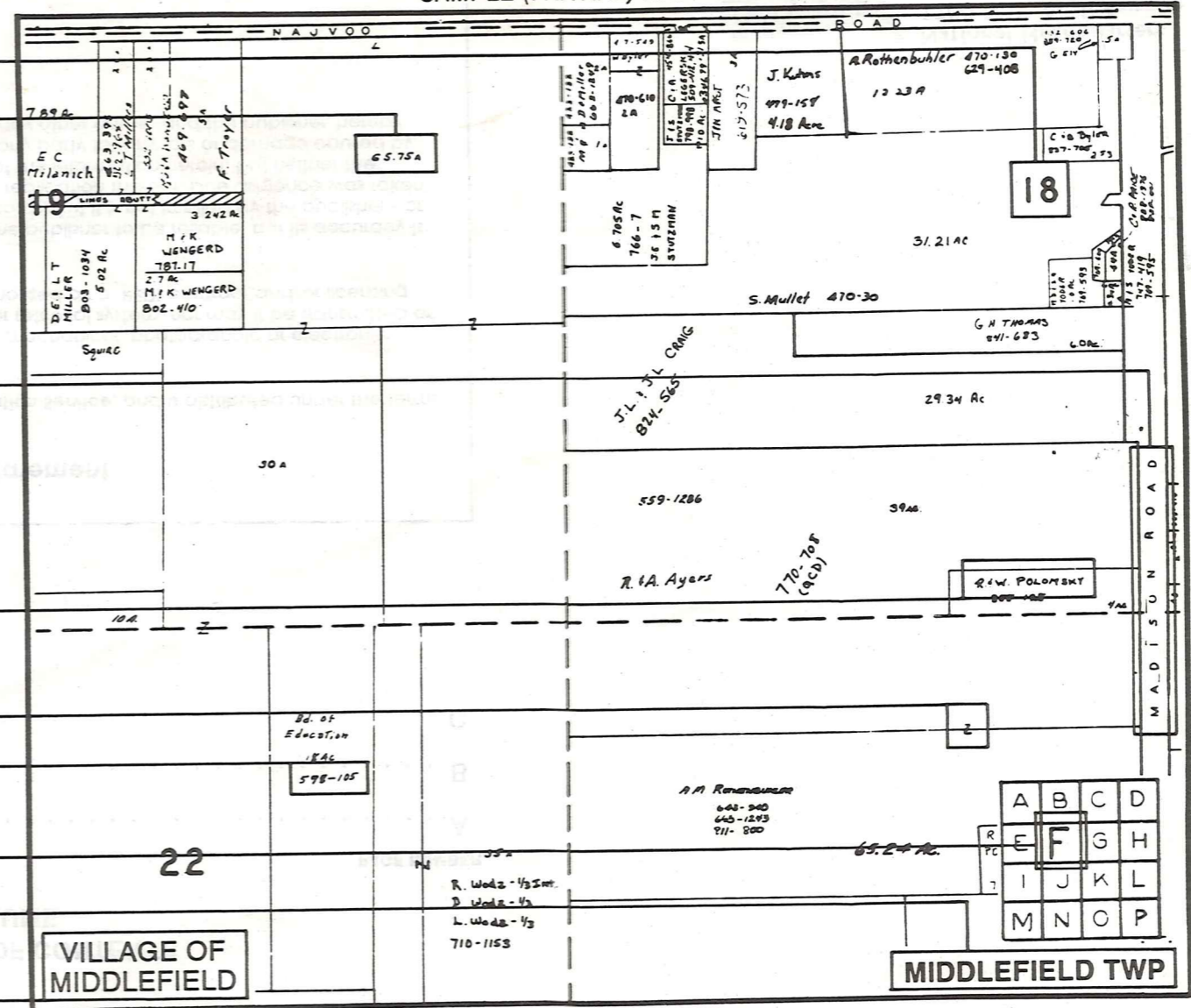
Village Boundary

Street Name

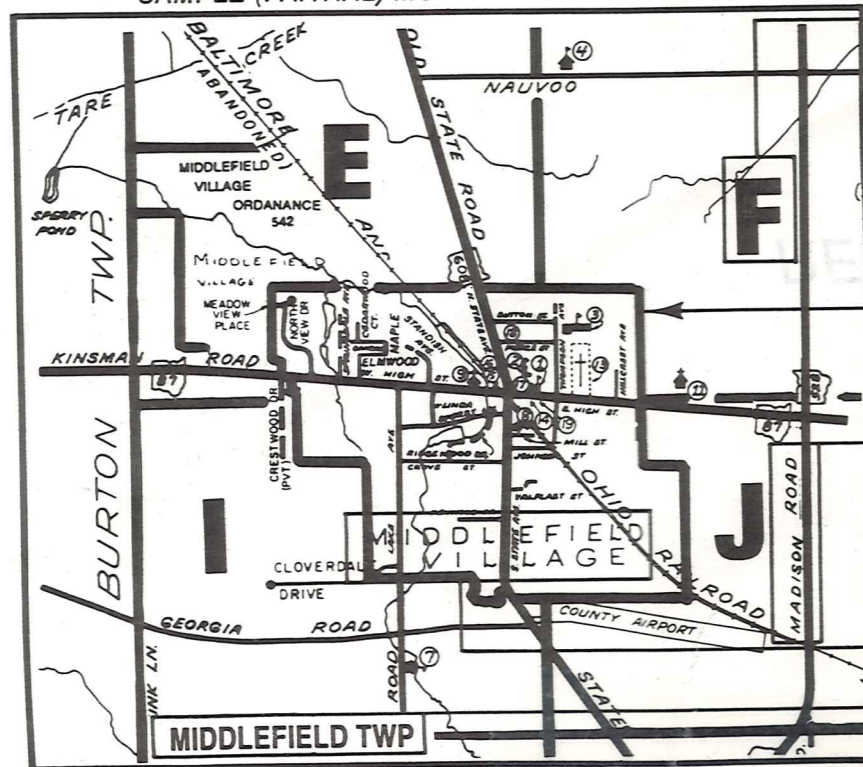
Village Name

Township Name

SAMPLE (PARTIAL) MAP PAGE



SAMPLE (PARTIAL) MUNICIPALITY INDEX MAP



USE OF THE MAP VOLUME

- LOCATE THE GENERAL AREA OF INTEREST ON THE COUNTY INDEX MAP AND NOTE THE MUNICIPALITY NAME (TOWNSHIP OR VILLAGE).
 - REFER TO THE TABLE OF CONTENTS AND NOTE THE BEGINNING ATLAS PAGE NUMBER FOR THE MUNICIPALITY OF INTEREST.
 - TURN TO THE PAGE INDICATED, ON THIS PAGE WILL APPEAR AN INDEX MAP FOR THAT MUNICIPALITY.
 - LOCATE THE GENERAL AREA OF INTEREST AND NOTE THE MAP PAGE NUMBER. THIS MAY BE EITHER A LETTER OR A NUMBER.
 - MAP PAGES ARE IN ALPHABETICAL (OR NUMERICAL) SEQUENCE FOLLOWING THE MUNICIPALITY INDEX MAP. FOLLOW SEQUENCE TO THE MAP PAGE INDICATED.
 - LOCATE SPECIFIC PARCEL OF INTEREST AND NOTE THE DESIRED INFORMATION.
- NOTE: ON SOME MAPS YOU MAY BE REFERRED TO A DETAIL SHEET SHOWING AN ENLARGEMENT OF THE AREA. THESE MAPS ARE FOUND AT THE END OF THE REGULAR MAP PAGES IN EACH MUNICIPALITY IN EITHER ALPHABETICAL OR NUMERICAL SEQUENCE.
- NOTE: CHARDON VILLAGE HAS TITLE SHEETS. TO LOCATE OWNERS NAME, NOTE THE PARCEL NUMBER, REFER TO THE TITLE PAGE FOLLOWING THE MAP OF INTEREST, FOLLOW NUMERICAL SEQUENCE TO THE PARCEL NUMBER OF INTEREST AND NOTE THE DESIRED INFORMATION. IN ALL OTHER MUNICIPALITIES THE OWNERS NAME APPEARS ON THE MAP PAGE.